

KAI MEDICAL DERMATOLOGY INSTRUMENT

-Biopsy Punch / Dermal Curette-



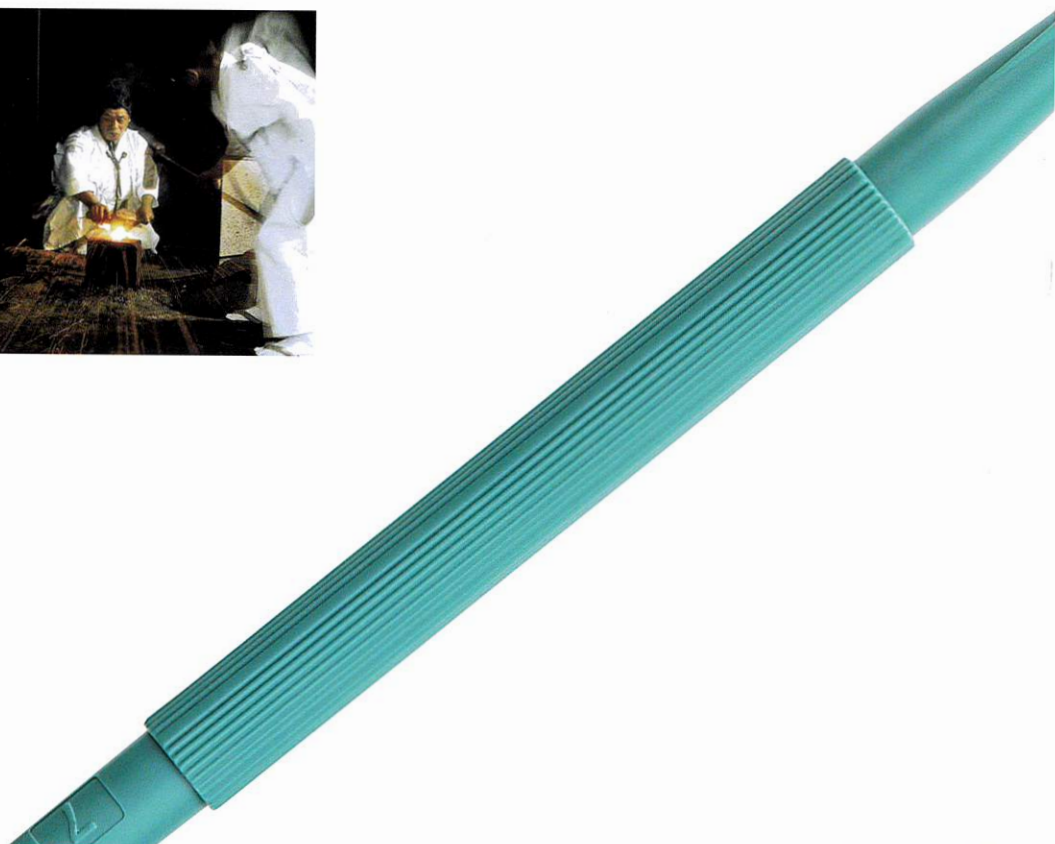
Founded in 1908 in Seki-shi, Gifu Prefecture, Japan, the KAI Group is a cutlery manufacturer with over 100 years of history. Based on the "Blacksmithing spirit" of making tools for everyday life with excellent craftsmanship, the company has continued to innovate with advanced factory facilities and improved production technologies.

The KAI Group incorporates the "DUPS" concept in product development. The products have to be well-designed (Design), unique (Uniqueness), patent-worthy (Patents), safe (Safety) and full of stories (Stories). Our goal is to create products that meet these criteria, and through our products, we hope to create wonderful experiences and enjoyable moments for our customers. Today, we offer more than 10,000 products, ranging from kitchenware, confectionery, beauty care products (household items) to professional cutlery and medical products.

We will continue to strive to make our products an integral part of the daily lives of people around the world, taking into account the materials they are made from and the environmental impact of their disposal.

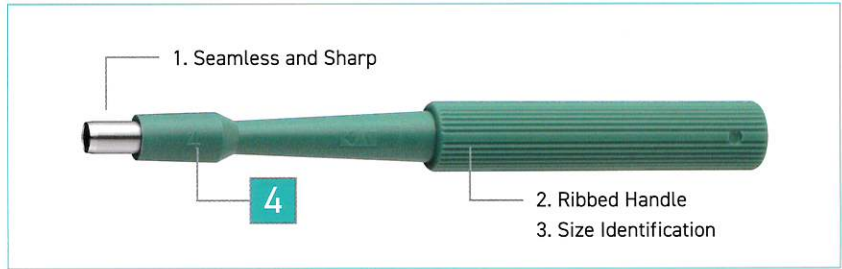
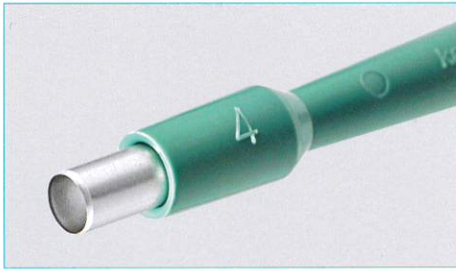
In the field of medical products, we use the technology we have developed in the production of razors and the other unique technology we have upgraded over the years to manufacture blades and instruments for use in ophthalmology, surgery and dermatology.

By improving the quality of our blades, we strive to improve the safety of the medical treatment and the quality of life (QoL) of patients around the world.





DISPOSABLE BIOPSY PUNCH



Feature

- Blade with excellent sharpness and seamless structure.
- Handle with straight knurling.
- Handle with its size embossed

All aimed for optimal tissue collection for biopsy.

Specification

- Blade : Stainless steel
- Sterilized
- Single use
- GS1-128 barcode
- 20 pcs/box

Application

- Skin biopsy
- Skin disease treatment

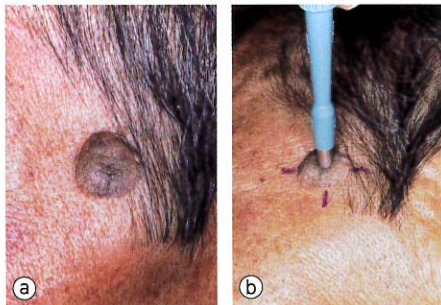
Size Lineup

Ref No.	Diameter	Ref No.	Diameter
BP-10F	1.0 mm	BP-35F	3.5 mm
BP-15F	1.5 mm	BP-40F	4.0 mm
BP-20F	2.0 mm	BP-50F	5.0 mm
BP-25F	2.5 mm	BP-60F	6.0 mm
BP-30F	3.0 mm	BP-80F	8.0 mm



Reference

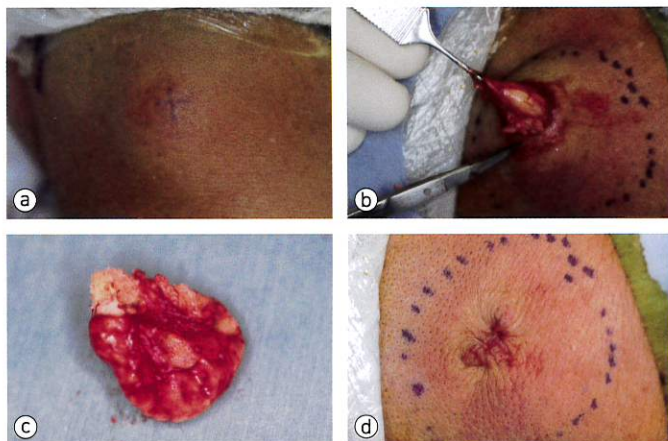
- Skin biopsy



Application to skin biopsy (Determining malignant or not).
Simple and less possibility of crushing tissue compared to surgical knife and needling.
Press the leading end of the punch vertically to the skin surface.
Uniformly distribute force between pressing and drilling.

- a : Senile wart developed on the face
- b : Positioning the biopsy punch site

- Simple microsurgical application (Simplified removal of subcutaneous tumor : boring method)

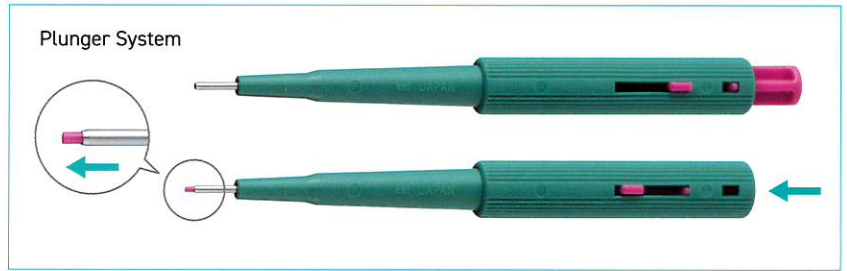
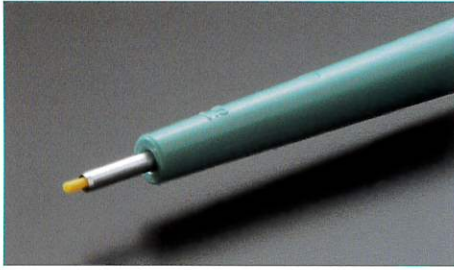


Application to an epidermal cyst.
Can minimize the incision line and bleeding.
Can omit the time and effort of suturing.

- a : Epidermal cyst of the neck
- b : Bore about 1/3 or 1/4 of the cyst diameter.
- c : Removed epidermal cyst.
- d : Surgical wound after removal.

Manabu MAEDA, MD & Ph D
Department of Dermatology, Hachiman Hospital

DISPOSABLE BIOPSY PUNCH WITH PLUNGER



Feature

Equipped with a plunger to the regular biopsy punch.
A single knock of the plunger can solve the possible tissue stuck inside the blade.

- Color coding for each size.






Specification

- Blade : Stainless steel
- Sterilized
- Single use
- GS1-128 barcode
- 20 pcs/box

Application

- Skin biopsy
- Skin disease treatment
- Skin reconstruction

Size Lineup

Ref No.	Diameter	Color
BPP-10F	1.0 mm	
BPP-15F	1.5 mm	
BPP-20F	2.0 mm	
BPP-30F	3.0 mm	
BPP-40F	4.0 mm	



Reference

- Simple microsurgical application (Total enucleation of small skin tumor)

The techniques is exactly the same as in skin biopsy.

Uniformly distribute force between pressing and drilling.

A relatively small lentigo or nevus cell nevus which are covered by the inner diameter of the biopsy punch.

Can avoid cutting extra cut of normal skin rather than spindle shape incision with a regular surgical knife.

- Simple microsurgical application (Removal of foreign body)



Application of boring method.

Remove foreign bodies (spines etc.) with small incision.
Can immediately walk after operation.

a : Spines to the toe.

b : Spine removed with 2.5 mm diameter punch.

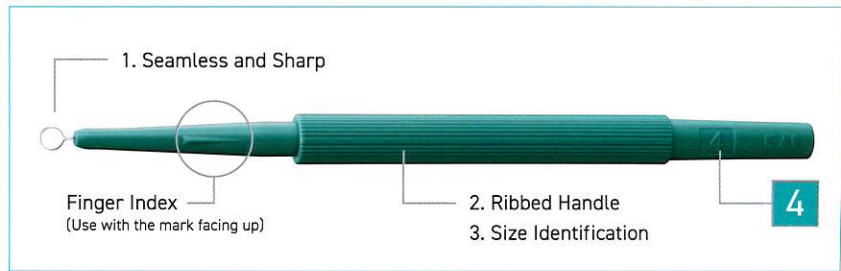
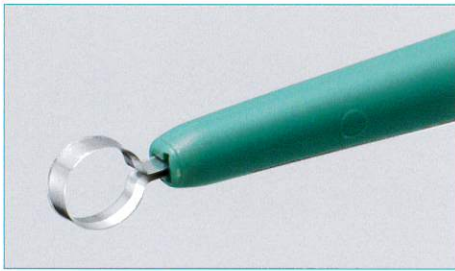
c : Removed spine.

d : After operation.

Manabu MAEDA, MD & Ph D

Department of Dermatology, Hachiman Hospital

DISPOSABLE DERMAL CURETTE



Feature

- Blade with excellent sharpness and seamless structure.
- Handle with straight knurling.
- Handle with its size embossed

All aimed to simplify soft tissue removal.

Specification

- Blade : Stainless steel
- Sterilized
- Single use
- GS1-128 barcode
- 20 pcs/box

Application

- Skin disease treatment
- Skin biopsy

Size Lineup

Ref No.	Diameter
MK402	2 mm
MK403	3 mm
MK404	4 mm
MK405	5 mm
MK407	7 mm



Reference

- Removing soft tissue at the affected area (Removal of malignant granulation)



Application to soft tissue removal.
Easier, more accurate and shorter time than typical way (forceps, coopers or surgical knife etc.)

- a : Affected area covered with malignant malignation. Difficult to epithelialize.
- b : Remove the surrounding epidermis thickened like a bank with 2 mm curette.
- c : Remove the malignant granulation with 3 mm curette.
- d : Artificial dermis adhered to the affected area.

- Removing soft tissue at the affected area (Removal of clavus)



Application to soft tissue removal.
After removal of clavus, apply Spiel ointment at the center of it. The whitened macerated site is similarly treated with the curette.

- a : Apply 2 mm curette to the plantar clavus.
- b : Rotate the blade full turn to shave the central part.

Manabu MAEDA, MD & Ph D
Department of Dermatology, Hachiman Hospital

Product list - Disposable Biopsy Punch

Application	Description	Ref No.
<ul style="list-style-type: none"> • Skin Biopsy • Dermatology Treatment 	BIOPSY PUNCH	
	BIOPSY PUNCH 1 mm	BP-10F
	BIOPSY PUNCH 1.5 mm	BP-15F
	BIOPSY PUNCH 2 mm	BP-20F
	BIOPSY PUNCH 2.5 mm	BP-25F
	BIOPSY PUNCH 3 mm	BP-30F
	BIOPSY PUNCH 3.5 mm	BP-35F
	BIOPSY PUNCH 4 mm	BP-40F
	BIOPSY PUNCH 5 mm	BP-50F
	BIOPSY PUNCH 6 mm	BP-60F
	BIOPSY PUNCH 8 mm	BP-80F
<ul style="list-style-type: none"> • Skin Biopsy • Dermatology Treatment 	BIOPSY PUNCH with Plunger	
	BIOPSY PUNCH 1 mm with Plunger	BPP-10F
	BIOPSY PUNCH 1.5 mm with Plunger	BPP-15F
	BIOPSY PUNCH 2 mm with Plunger	BPP-20F
	BIOPSY PUNCH 3 mm with Plunger	BPP-30F
	BIOPSY PUNCH 4 mm with Plunger	BPP-40F

Product list - Disposable Dermal Curette

Application	Description	Ref No.
<ul style="list-style-type: none"> • Dermatology Treatment • Skin Biopsy 	DERMAL CURETTE	
	DERMAL CURETTE 2 mm	MK402
	DERMAL CURETTE 3 mm	MK403
	DERMAL CURETTE 4 mm	MK404
	DERMAL CURETTE 5 mm	MK405
	DERMAL CURETTE 7 mm	MK407

Biopsy Punch (Regular and w/ Plunger)



Dermal Curette





Product specifications may change without notice.



KAI INDUSTRIES CO., LTD.

1110 Oyana, Seki-shi, Gifu 501-3992, Japan
Phone: +81 (0)575 28 5040
Fax: +81 (0)575 28 6611
www.kaimedical.jp/



VINGMED

Vingmed AB

Datavägen 9A, Box 576, 175 26 Järfälla
Tel: 08-583 593 00, Fax: 08-583 570 10
E-post: info@vingmed.se, www.vingmed.se



KAI EUROPE GmbH

Kottendorfer Straße 5, 42697 Solingen, Germany
Phone: +49 (0)212 23 23 80
Fax: +49 (0)212 23 23 899
www.kai-europe.com