



Your GI Endoscope can accomplish so much more.

NaviAid™ AB – Single balloon-assisted endoscopy.

NaviAid™ AB makes deep ileoscopy and upper enteroscopy on demand possible with fast and safe advancement in the small bowel. It can be introduced upon need through the endoscope's instrument channel and enables Controlled Withdrawal™ of the endoscope.

Your GI Endoscope can accomplish so much more.

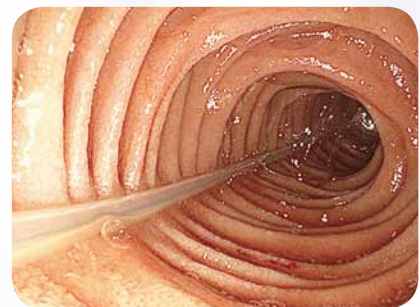
The NaviAid™ AB (Advancing Balloon) device enables you to carry out fast and easy ileoscopy and upper enteroscopy procedures with your standard endoscope.

Used on demand, no pre-mounting or preparation prior to the procedure is necessary. The device is introduced through the working channel of the endoscope, on the physician's decision, and advanced ahead of the endoscope.

Once inflated in its position preceding the endoscope and anchored in the bowel, the device becomes a "rail" on which the endoscope can be advanced, enabling rapid, safe intubation in the small bowel. Multiple advancement steps may be performed as needed, and the device may be removed and replaced at will, permitting biopsies and therapy to be conducted.

Key advantages:

- Works with your standard endoscope
- On demand usage
- Implemented through the working channel of the endoscope
- No pre-procedure preparation is required
- Easy and intuitive to use



NaviAid™ AB

Catheter Length	3,500 mm
Compatible Working Channel	≥ 3.7 mm
Balloon Diameter	40 mm
Inflated Balloon Set Pressure	60mbar
Set Pressure Tolerance	±10mbar
Balloon Inflation System- Power Supply	100-240VAC; 50-60Hz



Manufacturer:
Smart Medical Systems Ltd.
10 Hayetsira St.
Ra'anana · Israel
Tel: +972 9 / 7444 321
Fax: +972 9 / 7444 543
E-mail: info@smartmedsys.com

PENTAX Europe GmbH

Julius-Vosseler-Straße 104 · 22527 Hamburg · Tel.: +49 40 / 5 61 92 - 0
Fax: +49 40 / 5 60 42 13 · www.pentaxmedical.com

PENTAX
MEDICAL